

**Inverter Driven Heat Pump**

**24,000 BTU Single Zone XLTH Wall Mounted System**

Job Name \_\_\_\_\_  
 Location \_\_\_\_\_  
 Engineer \_\_\_\_\_  
 Submitted To \_\_\_\_\_  
 Submitted By \_\_\_\_\_  
 Reference \_\_\_\_\_

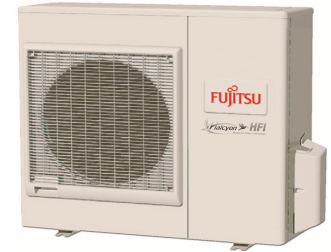
Date \_\_\_\_\_  
 Approval \_\_\_\_\_  
 Construction \_\_\_\_\_  
 Unit No \_\_\_\_\_  
 Drawing No \_\_\_\_\_

**PRODUCT FEATURES**

- Auto Changeover
- 24 hr. Timer
- Auto Louver: 4 way
- Minimum Heat Mode
- Wireless Remote control
- Auto Restart
- Economy Mode
- Base Pan Heater



Heating down to -15°F outdoor temperatures



**MODEL NUMBERS**

|              |             |
|--------------|-------------|
| Indoor Unit  | ASU24RLF    |
| Outdoor Unit | AOU24RLXFWH |
| System       | 24RLXFWH    |

**EFFICIENCIES**

|      |        |      |
|------|--------|------|
| SEER | 19.5   |      |
| EER  | 12.5   |      |
| HSPF | 10.5   |      |
| COP  | kW/kW  | 3.40 |
|      | Btu/hW | 11.6 |

**OUTDOOR TEMPERATURE OPERATION RANGE**

|         |        |                       |
|---------|--------|-----------------------|
| Cooling | *F(*C) | -5 to 115 (-20 to 46) |
| Heating |        | -15 to 75 (-26 to 24) |

**CAPACITIES**

|         |           |        |            |
|---------|-----------|--------|------------|
| Cooling | Rated     | BTU/hW | 22,000     |
|         | Min.-Max. |        | 9900-27300 |
| Heating | Rated     |        | 25,500     |
|         | Min.-Max. |        | 7500-36200 |

**LINESET REQUIREMENTS**

|                   |         |                 |  |
|-------------------|---------|-----------------|--|
| Connection Method | Flare   |                 |  |
| Liquid            | in (mm) | Ø 3/8 (Ø 9.52)  |  |
| Gas               |         | Ø 5/8 (Ø 15.88) |  |
| Pre-Charge Length |         | 66 (20)         |  |
| Minimum Length    | ft (m)  | 16 (5)          |  |
| Maximum Length    |         | 164 (50)        |  |
| Max. Height Diff. |         | 98 (30)         |  |

**INDOOR DIMENSIONS & WEIGHT**

|                   |         |                            |
|-------------------|---------|----------------------------|
| Net (H x W x D)   | in      | 12-5/8 x 39-1/4 x 9        |
|                   | mm      | 320 x 998 x 228            |
| Gross (H x W x D) | in      | 12-3/5 x 42-15/16 x 16-7/8 |
|                   | mm      | 319 x 1090 x 429           |
| Net Weight        | lb (kg) | 31 (14)                    |
| Gross Weight      |         | 40 (18)                    |

**OUTDOOR DIMENSIONS & WEIGHT**

|                   |         |                           |
|-------------------|---------|---------------------------|
| Net (H x W x D)   | in      | 32-11/16 x 35-7/16 x 13   |
|                   | mm      | 830 x 900 x 330           |
| Gross (H x W x D) | in      | 39-3/8 x 41-5/16 x 17-1/2 |
|                   | mm      | 1,000 x 1,050 x 445       |
| Net Weight        | lb (kg) | 135 (61)                  |
| Gross Weight      |         | 152 (69)                  |

**Warranty Information**



7 Year Compressor, 5 Year Parts out-of-the-box Warranty



10 Year Compressor, 10 Year Parts Warranty when registered within 60 days of installation in a residence



12 Year Compressor, 12 Year Parts Warranty when registered within 60 days of installation in a residence, and installed by a Fujitsu Elite contractor

**ACCESSORIES**

|                |                                |
|----------------|--------------------------------|
| UTY-TTRX       | 3rd Party Thermostat Converter |
| UTY-RNNUM      | Wired Remote                   |
| UTY-RVNUM      | Wired Remote w/backlight       |
| UTY-RSNUM      | Simple Remote                  |
| UTY-XWZX       | Dry Contact Wire Kit           |
| FJ-RC-WIFI-1NA | Intesis Wired WiFi Module      |
| FJ-IR-WIFI-1NA | Intesis IR WiFi Module         |
| UTY-TFNXZ2     | WiFi Interface Module          |



This system combination is Energy Star qualified



Indoor Unit ETL#: 3170288  
 Outdoor Unit ETL#: 91987

Due to continuous product improvements, specifications are subject to change without notice. Please log in to the Fujitsu Portal for the most up-to-date documentation <https://portal.fujitsugeneral.com>

**Inverter Driven Heat Pump** **24,000 BTU Single Zone XLTH Wall Mounted System**

**FAN DATA**

|                           |         |               |            |            |
|---------------------------|---------|---------------|------------|------------|
| Indoor Unit Airflow Rate  | Cooling | High          | CFM (m3/h) | 659 (1120) |
|                           |         | Medium        |            | 530 (900)  |
|                           |         | Low           |            | 435 (740)  |
|                           |         | Quiet         |            | 365 (620)  |
|                           | Heating | High          | 677 (1150) |            |
|                           |         | Medium        | 530 (900)  |            |
|                           |         | Low           | 435 (740)  |            |
|                           |         | Quiet         | 365 (620)  |            |
| Outdoor Unit Airflow Rate | Cooling | 2,001 (3,400) |            |            |
|                           | Heating | 2,119 (3,600) |            |            |

**SOUND PRESSURE**

|              |         |        |        |    |
|--------------|---------|--------|--------|----|
| Indoor Unit  | Cooling | High   | dB (A) | 49 |
|              |         | Medium |        | 42 |
|              |         | Low    |        | 37 |
|              |         | Quiet  |        | 33 |
|              | Heating | High   | 49     |    |
|              |         | Medium | 42     |    |
|              |         | Low    | 37     |    |
|              |         | Quiet  | 33     |    |
| Outdoor Unit | Cooling | 54     |        |    |
|              | Heating | 55     |        |    |

**REFRIGERANT**

|          |            |              |  |
|----------|------------|--------------|--|
| Type     | R410A      |              |  |
| Charge   | lb oz      | 4 lb 10.1 oz |  |
|          | kg         | 2,100        |  |
| Oil Type | POE (RB68) |              |  |

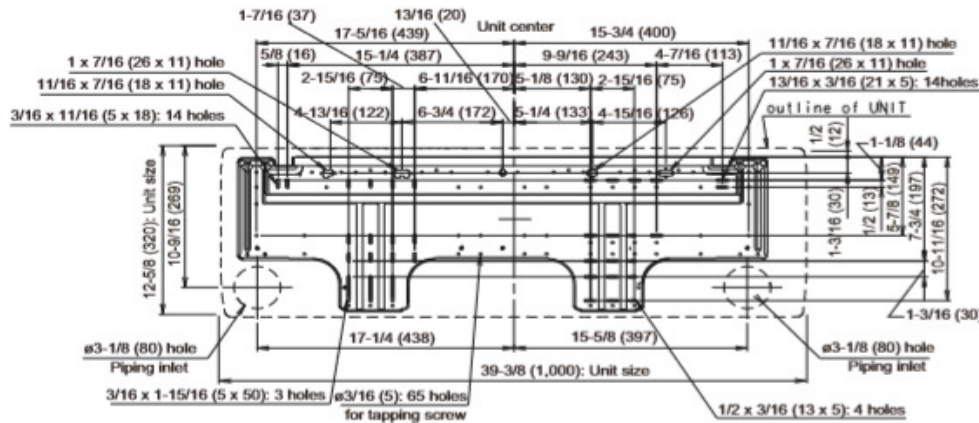
**ELECTRICAL SPECIFICATIONS**

|                           |         |           |               |           |
|---------------------------|---------|-----------|---------------|-----------|
| Voltage/Frequency/Phase   |         |           | 208/230V~60HZ |           |
| Voltage Range             |         |           | 187-253V~60HZ |           |
| Current                   | Cooling | Rated     | A             | 7.9       |
|                           | Heating | Rated     |               | 10.5      |
| Maximum Operating Current |         | Cooling   |               | 15        |
|                           |         | Heating   |               | 15.5      |
| Starting Current          |         |           | 8.6           |           |
| MCA                       |         |           | 18            |           |
| Maximum Circuit Breaker   |         |           | 20            |           |
| Input Power               | Cooling | Rated     | kW            | 1.76      |
|                           |         | Min.-Max. |               | 0.58-3.42 |
| Power Factor              | Cooling | Rated     | %             | 97        |
|                           |         | Min.-Max. |               | 0.50-3.53 |
| Power Factor              | Heating | Rated     | %             | 99        |
|                           |         | Min.-Max. |               | 0.50-3.53 |

**OTHER**

|                  |               |  |                     |
|------------------|---------------|--|---------------------|
| Moisture Removal | pints/h (L/h) | 3(6.3)                                     |                     |
| Energy Star      |               | YES  |                     |
| Drain hose       | Material      | PVC  |                     |
| Size             | in (mm)       | Ø 15/32 (Ø 12) (I.D.), Ø 5/8 (Ø 16) (O.D.) |                     |
| Operation Range  | Cooling       | °F (°C)                                    | 64 to 90 (18 to 32) |
|                  |               | %RH  | 80 or less          |
|                  | Heating       | °F (°C)                                    | 88 (30) or less     |

**Wall Bracket Data:**



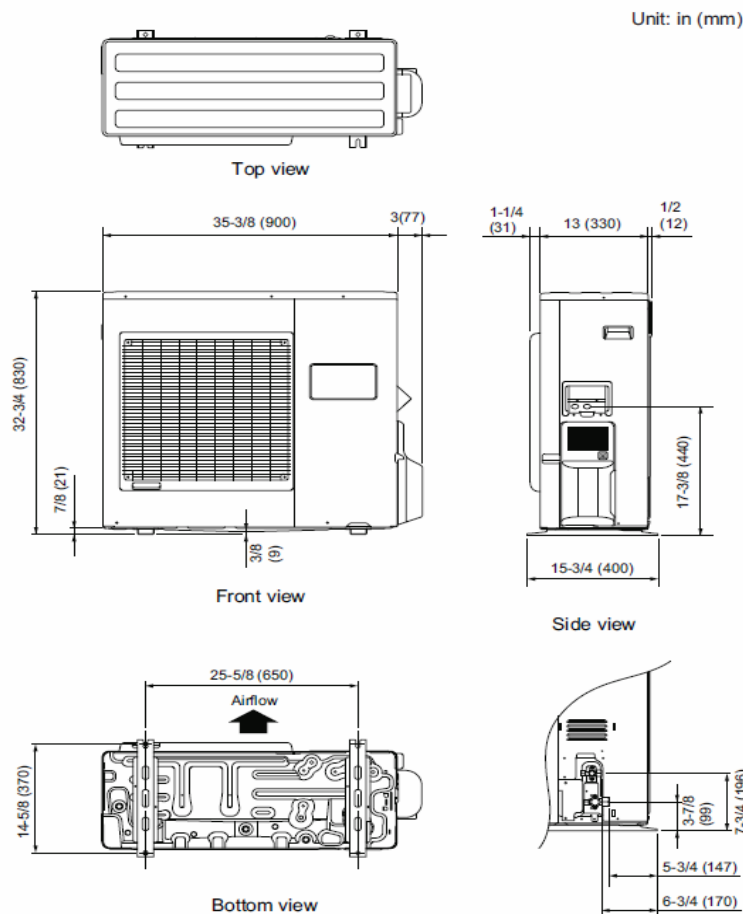
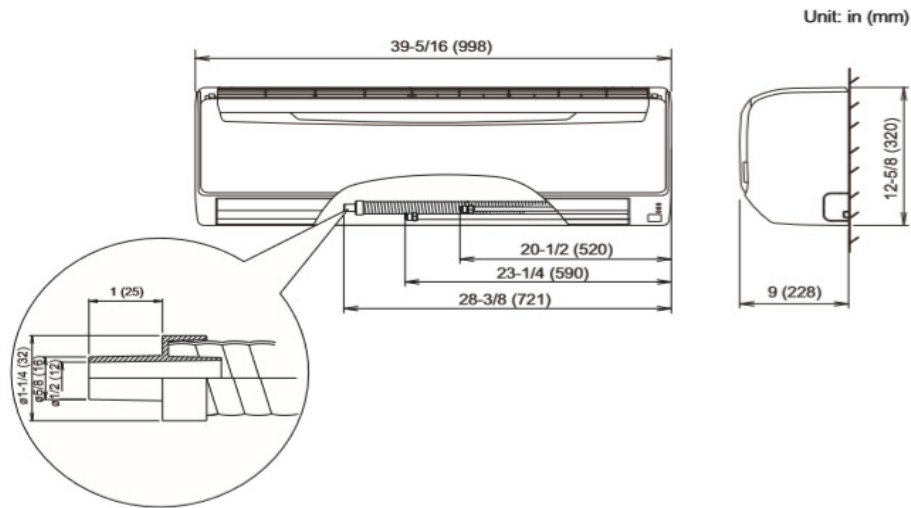
The Fujitsu logo is a worldwide trademark of Fujitsu General Limited. The Halcyon logo and name is a worldwide trademark of Fujitsu General Limited and is a registered trademark in Japan, the USA and other countries or areas. Copyright 2018 Fujitsu General America, Inc. Fujitsu's products are subject to continuous improvements. Fujitsu reserves the right to modify product design, specifications and information in this brochure without notice and without incurring any obligations.

Note: Specifications are based on the following conditions:  
 Cooling: Indoor temperature of 80°F (26.7°C) DB/67°F (19.4°C) WB, and outdoor temperature of 95°F (35°C) DB/75°F (23.9°C) WB. Heating: Indoor temperature of 70°F (21.1°C) DB/60°F (15.6°C) WB, and outdoor temperature of 47°F (8.3°C) DB/43°F (6.1°C) WB. Pipe length: 25ft. (7.5m), Height difference: 0ft. (0m) (Outdoor unit - indoor unit).

Inverter Driven Heat Pump 24,000 BTU Single Zone XLTH Wall Mounted System

DIMENSIONS

Units: In. (mm)



The Fujitsu logo is a worldwide trademark of Fujitsu General Limited. The Halcyon logo and name is a worldwide trademark of Fujitsu General Limited and is a registered trademark in Japan, the USA and other countries or areas. Copyright 2018 Fujitsu General America, Inc. Fujitsu's products are subject to continuous improvements. Fujitsu reserves the right to modify product design, specifications and information in this brochure without notice and without incurring any obligations.

Note: Specifications are based on the following conditions:  
 Cooling: Indoor temperature of 80°F (26.7°C) DB/67°F (19.4°C) WB, and outdoor temperature of 95°F (35°C) DB/75°F (23.9°C) WB. Heating: Indoor temperature of 70°F (21.1°C) DB/60°F (15.6°C) WB, and outdoor temperature of 47°F (8.3°C) DB/43°F (6.1°C) WB. Pipe length: 25ft. (7.5m), Height difference: 0ft. (0m) (Outdoor unit - indoor unit).