

Inverter Driven Heat Pump

42,000 BTU Circular Flow Cassette

Job Name _____
 Location _____
 Engineer _____
 Submitted To _____
 Submitted By _____
 Reference _____

Date _____
 Approval _____
 Construction _____
 Unit No _____
 Drawing No _____

PRODUCT FEATURES

- 360° Circular flow distributes air more evenly around the room
- Adjustable louver swing
- Adjustable airflow
- Optional human sensor detects room occupancy for energy savings
- 7mm High density heat exchanger
- Seamless airflow louver
- Grille available in White (UTG-GCGF) or Black (UTG-LCGVCB), sold separately



MODEL NUMBERS	
Indoor Unit	AUU42RGLX
Outdoor Unit	AOU42RGLX
System	42RGLXC

EFFICIENCIES		
SEER	18.5	
EER	11.3	
HSPF	9.7	
COP	kW/kW	3.69
	Btu/hW	12.6

OUTDOOR TEMPERATURE OPERATION RANGE	
Cooling	*F(°C) -5 to 115 (-20 to 46)
Heating	-5 to 75 (-20 to 24)

CAPACITIES			
Cooling	Rated	BTU/hW	42,000
	Min.-Max.		17,100-45,000
Heating	Rated	BTU/hW	47,000
	Min.-Max.		18,000-51,000

LINESET REQUIREMENTS		
Connection Method Flare		
Liquid	in (mm)	Ø 3/8 (9.52)
		Ø 5/8 (15.88)
Pre-Charge Length	ft (m)	98 (30)
Minimum Length		16 (5)
Maximum Length		246 (75)
Max. Height Diff.		98 (30)

INDOOR DIMENSIONS & WEIGHT		
Net (H x W x D)	in	11-5/16 x 33-1/16 x 33-1/16
	mm	288 x 840 x 840
Gross (H x W x D)	in	13-3/8 x 37-13/16 x 37-3/8
	mm	340 x 960 x 950
Net Weight	lb (kg)	64 (29)
Gross Weight		73 (33)

OUTDOOR DIMENSIONS & WEIGHT		
Net (H x W x D)	in	50-13/16 x 35-7/16 x 13
	mm	1,290 x 900 x 330
Gross (H x W x D)	in	57-1/2 x 41-5/16 x 17-1/2
	mm	1,460 x 1,050 x 445
Net Weight	lb (kg)	209 (95)
Gross Weight		231 (105)

Warranty Information



7 Year Compressor, 5 Year Parts out-of-the-box Warranty



10 Year Compressor, 10 Year Parts Warranty when registered within 60 days of installation in a residence



12 Year Compressor, 12 Year Parts Warranty when registered within 60 days of installation in a residence, and installed by a Fujitsu Elite contractor

ACCESSORIES

UTG-GCGF	White Cassette Grille
UTG-LCGVCB	Black Cassette Grille
UTY-RNRUZZ	Wired Remote Control
UTY-RSRY	Simple Remote Control
UTY-LBTUC	IR Receiver Kit w/ Wireless Remote
UTY-SHZXC	Human Sensor Kit
UTY-TTRX	Third Party Thermostat Adapter
UTY-TFSXZ2	WiFi Module
KHRS940-25	Fresh Air Kit



Indoor Unit ETL#: 3170288
 Outdoor Unit ETL#: 91987



SUBMITTAL 42RGLXC



Inverter Driven Heat Pump

42,000 BTU Circular Flow Cassette

FAN DATA

Indoor Unit Airflow Rate	Cooling	High	CFM (m3/h)	1,177 (2,000)
		Medium		971 (1,650)
		Low		859 (1,460)
		Quiet		765 (1,300)
	Heating	High		1,177 (2,000)
		Medium		971 (1,650)
		Low		859 (1,460)
		Quiet		765 (1,300)
Outdoor Unit Airflow Rate	Cooling		3,973 (6,750)	
	Heating		3,649 (6,200)	

SOUND PRESSURE

Indoor Unit	Cooling	High	dB (A)	46
		Medium		42
		Low		39
		Quiet		35
	Heating	High		46
		Medium		42
		Low		39
		Quiet		35
Outdoor Unit	Cooling		55	
	Heating		57	

REFRIGERANT

Type	R410A		
Charge	lb oz	7 lb 10.1oz	
	g	3,450	
Oil Type	POE (RB68)		

CASSETTE GRILL (SOLD SEPARATELY)

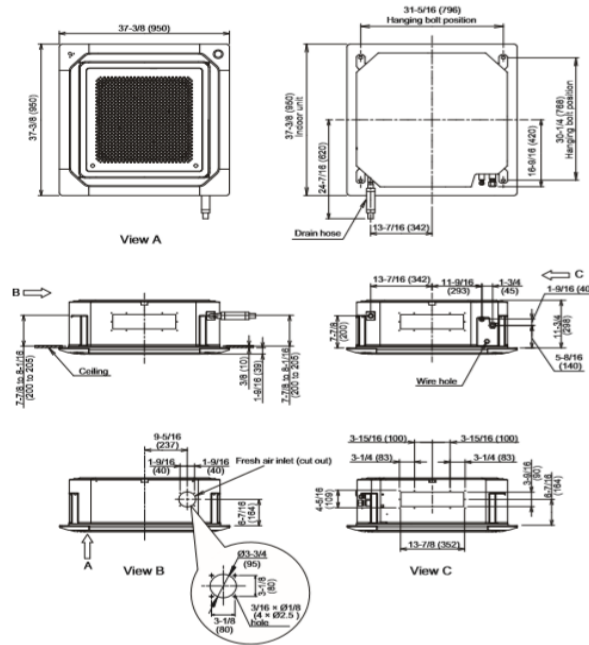
Color	UTG-GCGF	White		
	UTG-LCGVB	Black		
Dimensions (H x W x D)	Net	in (mm)	2- 1/16 x 37-3/8 x 37 3/8	
			(53 x 950 x 950)	
	Gross		4-5/16 x 39-3/8 x 39-3/4	
			(110 x 1,000 x 1,000)	
Weight	Net	lb (kg)	13 (6.0)	
	Gross		22 (10)	

ELECTRICAL SPECIFICATIONS

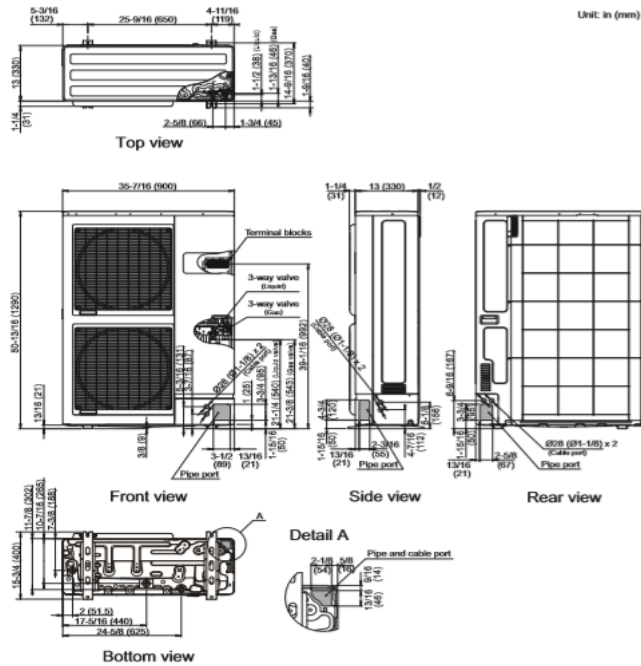
Voltage/Frequency/Phase			208-230V/60Hz/1	
Voltage Range			187-253 V	
Current	Cooling	Rated	A	16.7
	Heating	Rated		16.8
Maximum Operating Current		Cooling		19.7
		Heating		19.7
Starting Current			16.8	
MCA			25.2	
Maximum Circuit Breaker			30	
Input Power	Cooling	Rated	kW	3.72
		Min.-Max.		0.63-4.35
	Heating	Rated		3.74
		Min.-Max.		0.55-4.39
Power Factor	Cooling		%	97
	Heating			97
OTHER				
Moisture Removal		pints/h (L/h)		7.7 (4.4)
Energy Star	No			
Drain hose	Material		PVC (VP25)	
	Size	in (mm)	Ø 1 (25) (I.D.), Ø 1-1/16 (26.6)	
Operation Range	Cooling	°F (°C)	64 to 90 (18 to 32)	
		%RH	80 or less	
	Heating	°F (°C)	60 to 86 (16 to 30)	

The Fujitsu logo is a worldwide trademark of Fujitsu General Limited. The Halcyon logo and name is a worldwide trademark of Fujitsu General Limited and is a registered trademark in Japan, the USA and other countries or areas. Copyright 2018 Fujitsu General America, Inc. Fujitsu's products are subject to continuous improvements. Fujitsu reserves the right to modify product design, specifications and information in this brochure without notice and without incurring any obligations.

Note: Specifications are based on the following conditions:
 Cooling: Indoor temperature of 80°F (26.7°C) DB/67°F (19.4°C) WB, and outdoor temperature of 95°F (35°C) DB/75°F (23.9°C) WB. Heating: Indoor temperature of 70°F (21.1°C) DB/60°F (15.6°C) WB, and outdoor temperature of 47°F (8.3°C) DB/43°F (6.1°C) WB. Pipe length: 25ft. (7.5m), Height difference: 0ft. (0m) (Outdoor unit - indoor unit).



2-2. Models: AOU42RGLX and AOU48RGLX



The Fujitsu logo is a worldwide trademark of Fujitsu General Limited. The Halcyon logo and name is a worldwide trademark of Fujitsu General Limited and is a registered trademark in Japan, the USA and other countries or areas. Copyright 2018 Fujitsu General America, Inc. Fujitsu's products are subject to continuous improvements. Fujitsu reserves the right to modify product design, specifications and information in this brochure without notice and without incurring any obligations.

Note: Specifications are based on the following conditions:
 Cooling: Indoor temperature of 80°F (26.7°C) DB/67°F (19.4°C) WB, and outdoor temperature of 95°F (35°C) DB/75°F (23.9°C) WB. Heating: Indoor temperature of 70°F (21.1°C) DB/60°F (15.6°C) WB, and outdoor temperature of 47°F (8.3°C) DB/43°F (6.1°C) WB. Pipe length: 25ft. (7.5m), Height difference: 0ft. (0m) (Outdoor unit - indoor unit).